


# Elevating trust, inspiring passion.

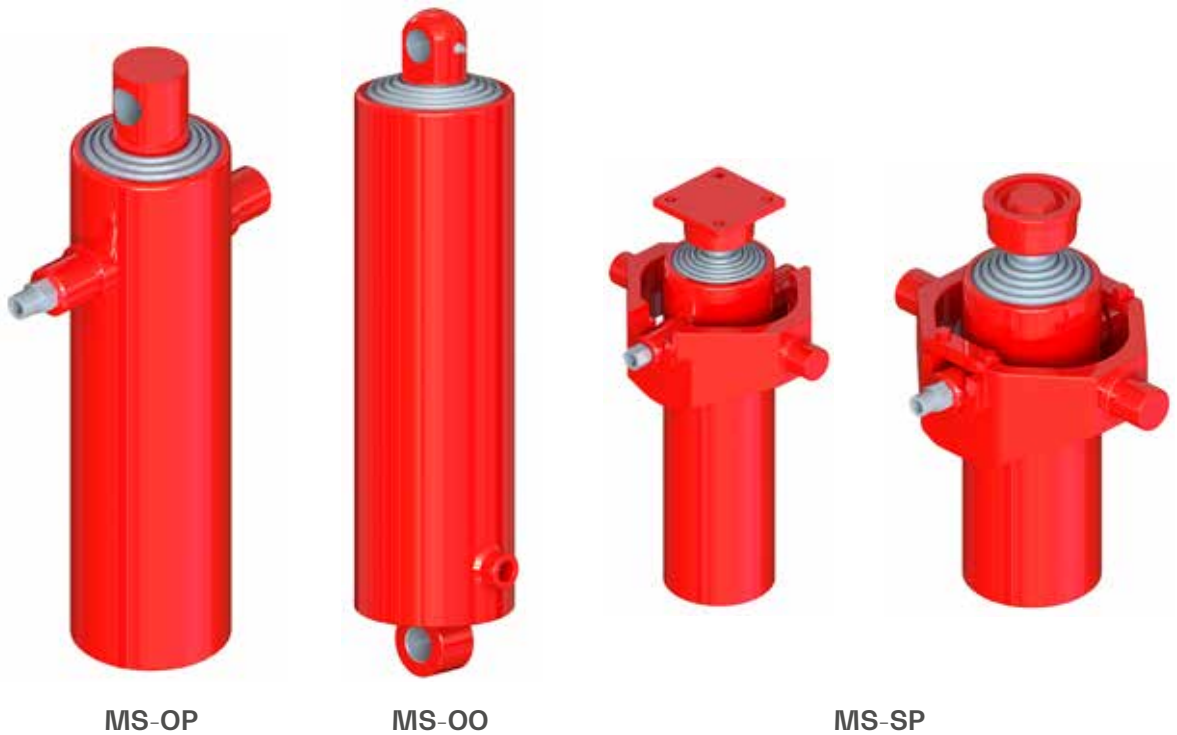
The reference  
underbody cylinder for  
your tipping vehicle.



 **MARIZ**

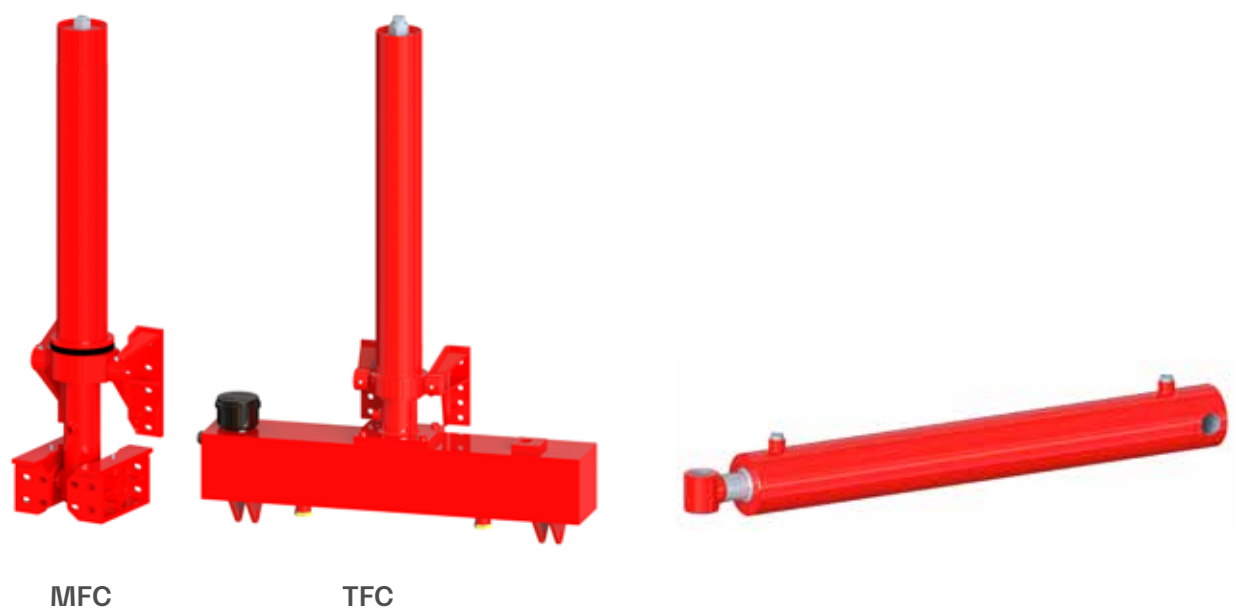


**Mariz** produces a wide range of telescopic cylinders and is recognized as an industry benchmark. The company offers the highest quality standards, thanks to a state-of-the-art production facility capable to respond to the changing market needs.



## UNDERBODY CYLINDERS

The Mariz underbody cylinders for the light industrial tippers set the standard for the industry. An impressive range of models covers all the different customers requirement. The underbody cylinders are manufactured using the most accurate machining to achieve the finest finish and precise tolerances. Chrome plated stages and external zinc plated finished tubes are also available, upon request.

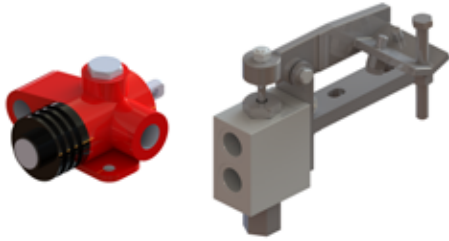


## FRONT-END CYLINDERS

Mariz offers different type of front-end cylinders for agricultural dump trailers and for other light and medium duty commercial vehicle applications. Bespoke bracketry and other special body accessories are available for easy fitting and perfect installation.

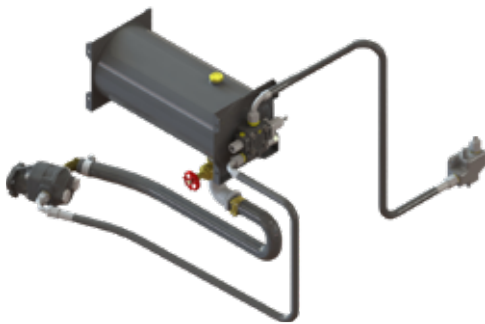
## DOUBLE ACTING CYLINDERS

The cutting-edge technology and the tested quality, ensures a range of double-acting cylinders, suitable for industrial vehicles such as hook lifts, skip loaders and garbage compactors. Thanks to the perfect choice of raw materials and special treatments, the Mariz hydraulic cylinder can operate in the most extreme conditions.



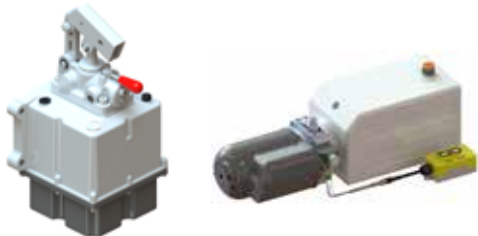
## END-OF-STROKE VALVES

High quality selection of knock-off valves to complete the tipping kit, increase safety and control of the whole system. For light, medium and heavy-duty applications. With nickel plate spool and high-resistance anti-shock spring, pulled by cable. Mariz also offers a complementary electrical limit switch which is usually installed to cut off the power to an electric device included in the tipping system.



## COMPLETE PTO-PUMP KITS

Extensive selection of power take-offs to be coupled with the most of the existing gearbox transmissions used by the main chassis manufacturers worldwide: mechanical, pneumatic, vacuum controlled and clutch coupling. All other hydraulic, mechanical and pneumatic complementary products and accessories are available to operate the telescopic cylinders.



## HAND PUMPS AND POWERPACKS

When it is not possible to drive a pump and activate any application by using the PTO of the truck/vehicle, then electric power-packs or alternatively hand- pumps are the best solutions available.

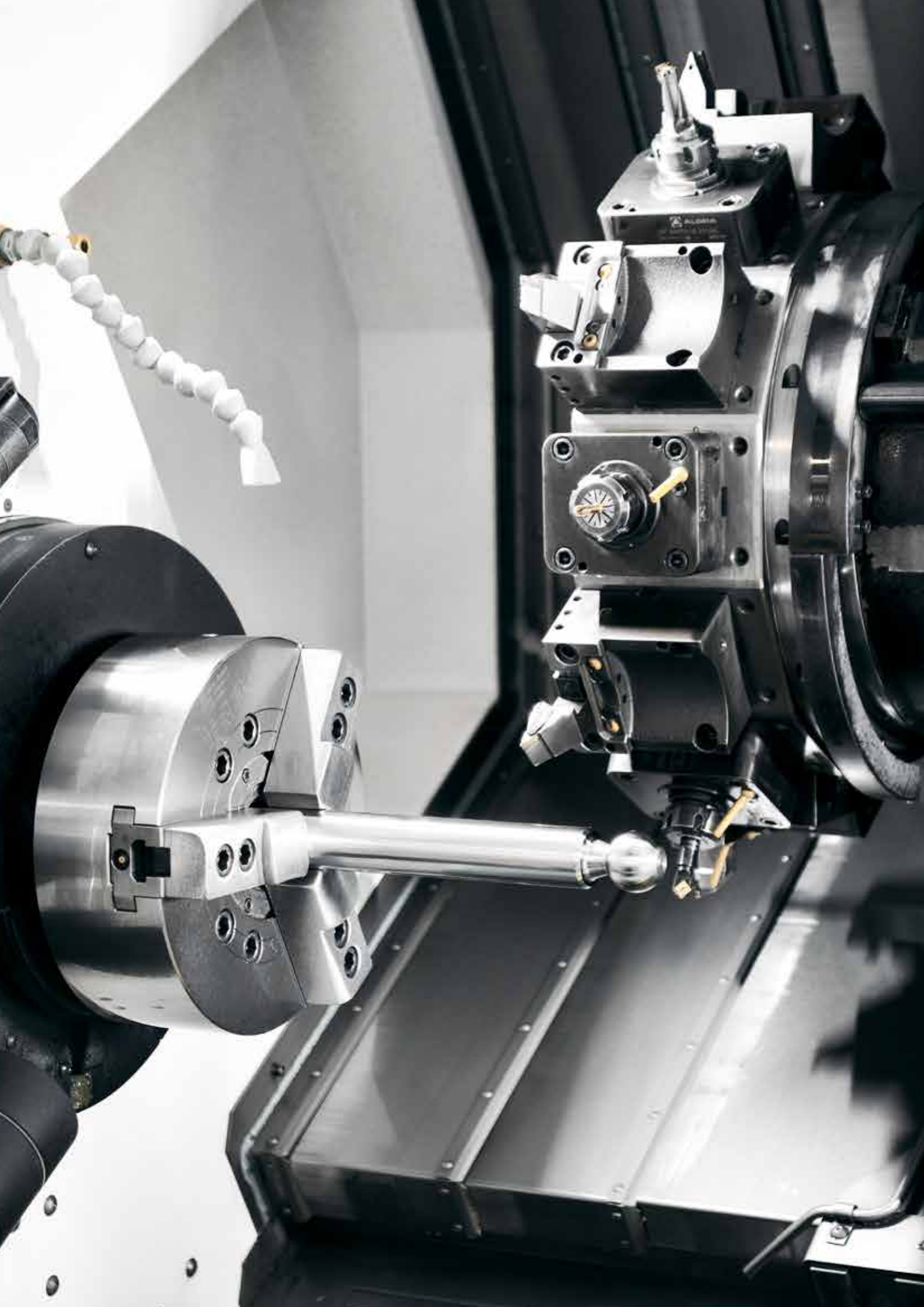
## ADAPTERS AND PARACHUTE VALVES

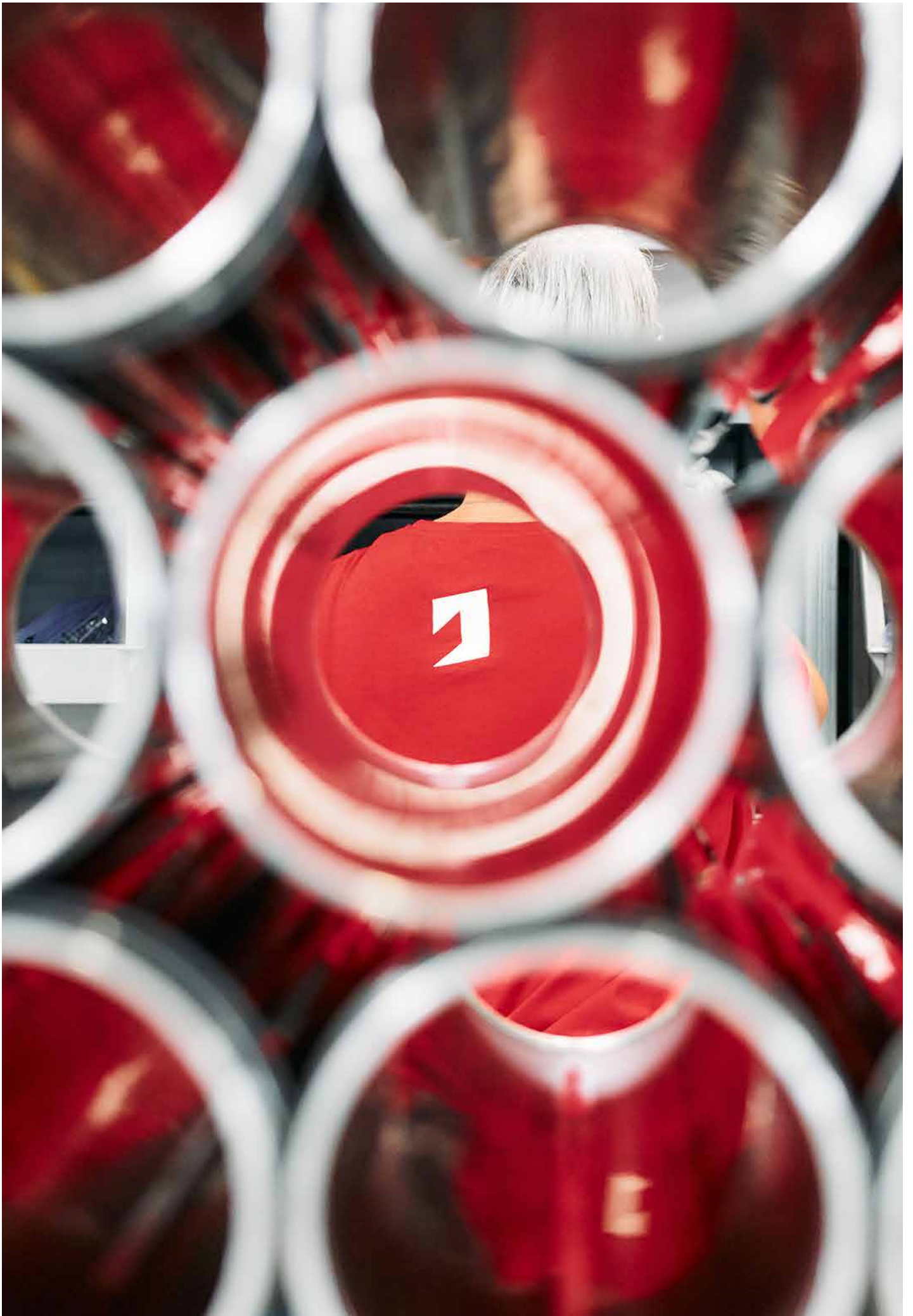
Straight and elbow (90°) turning adapters are available as complementary accessories for easy fitting and connection of Mariz cylinders to the hydraulic circuits. Parachute valves are safety valves for cylinder in case of accidents.

## 2 AND 3 WAY BALL KITS

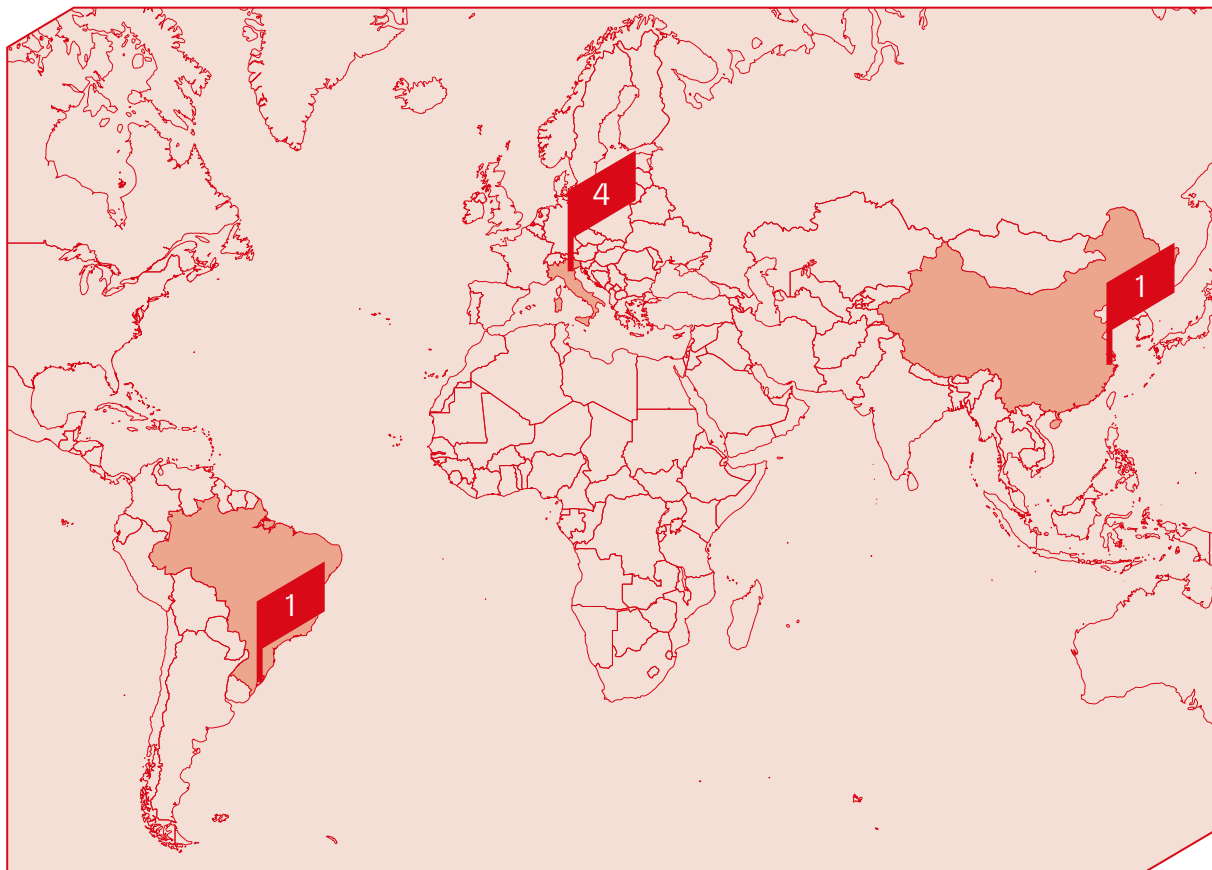
Mariz provides a 4-ball kit (to be fixed onto the chassis) with related sockets (to be fixed under the tipping body) and 2 locking pins, which are used to lock 2 sockets and 2 balls and as a consequence determine the tipping direction.







# Binotto Group



## Production facilities

Binotto  
**Dueville, IT**  
**Stanghella, IT**

Tecno3  
**Fiorenzuola D'Arda, IT**

Mariz  
**Fontaniva, IT**

Binotto Brazil  
**Flores da Cunha, BR**

Binotto China  
**Wuxi, CN**

## Subsidiaries

Italy  
Spain  
Ireland  
UK  
Poland  
Russia  
Usa  
Peru  
Chile  
Brazil  
China



Mariz S.r.l.  
Viale dell'Industria, 32  
35014 Fontaniva  
(PADOVA) ITALY

info@mariz.com  
tel +39 049 5942402

[binottogroup.com](http://binottogroup.com)

